

The Machine condition monitoring diagnostic data receiver Installation instructions

This specification is applicable to the SD3400 and SD3410 series

Safety warnings and instructions

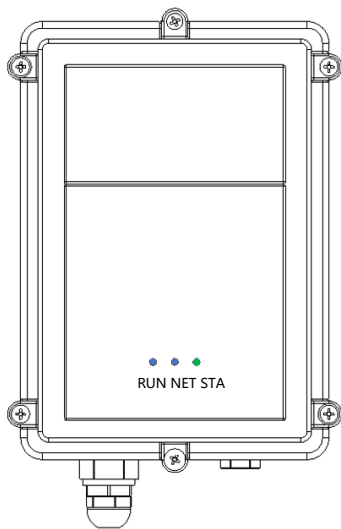
In order to use your products correctly and safely, please read this book carefully.

- Non-professionals do not remove the products, if there is any fault, please contact
- The product will sometimes develop the installation plan according to the site environment, without the consent of the technical personnel of the manufacturer, using any way not specified in this manual;
- The necessary requirements of this product are good ZigBee signal communication quality; for 4G network mode transmission, good 4G signal quality and Ethernet is available on site.

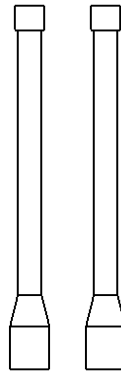
product list

After opening the product packaging box, please check whether the items in the packaging box are complete. If there is any missing, please contact us quickly. The actual configuration is subject to the "Product packing List".

Product host: SD-GW5001 (general version)



SD-GW5001 (General Edition) * 1



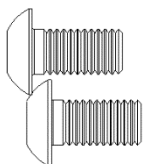
Antenna

Product introduction

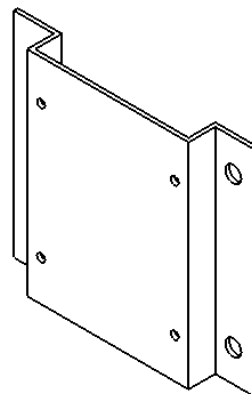
Product specification and
warranty card * 1

Product qualification

Wall-mounted

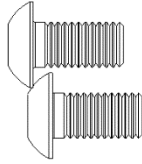


The screw * 4

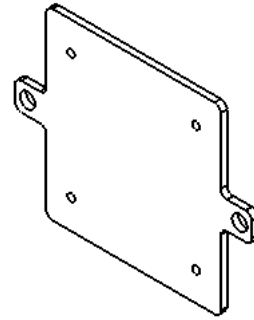


Wall-mounted mounting
connector * 1

Srough-mounted steel

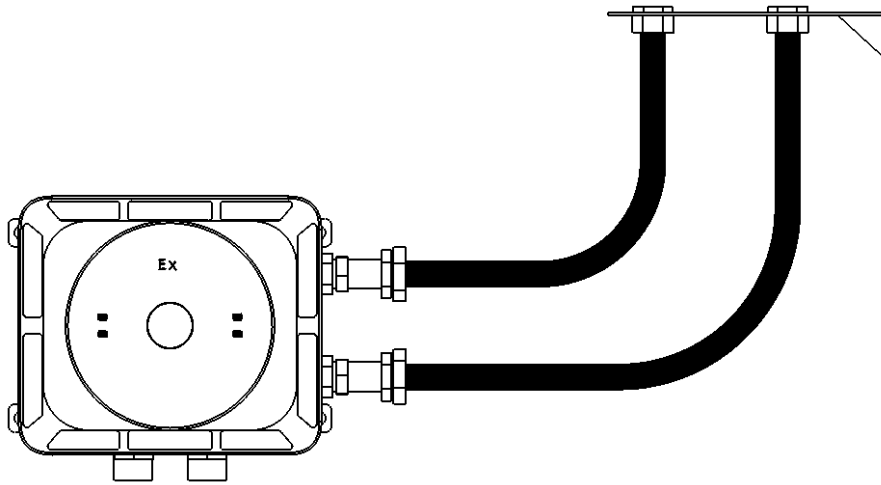


The screw * 4



Trough-type steel
mounting connector * 1

Product host: SD3410 (explosion-proof version)

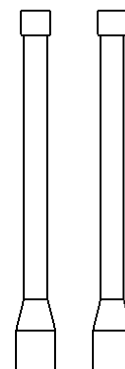


SD3410 (explosion-proof version) * 1

Product introduction

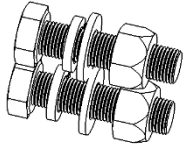
Product specification and warranty card * 1

Product qualification certificate * 1

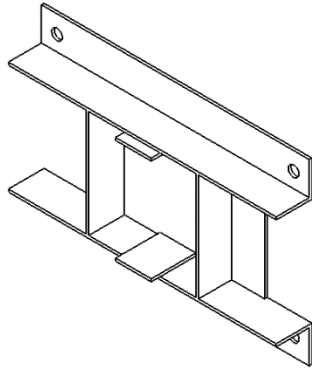


Antenna * 2

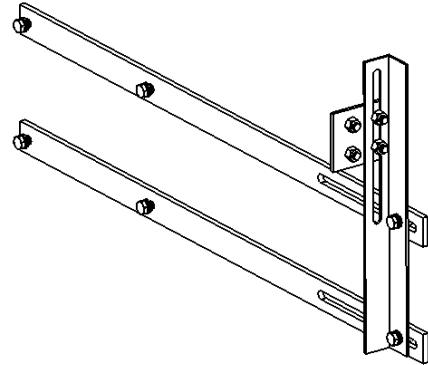
Welded mounting parts of prefabricated support



Bolts * 10



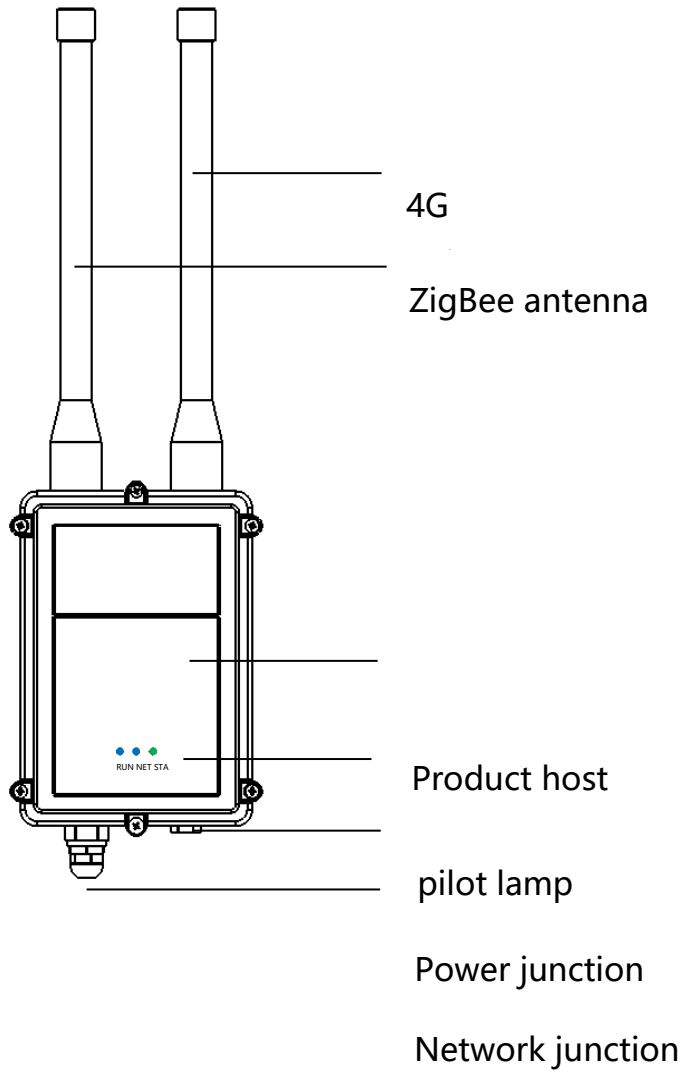
Precast stent A * 1



Precast stent, B * 1

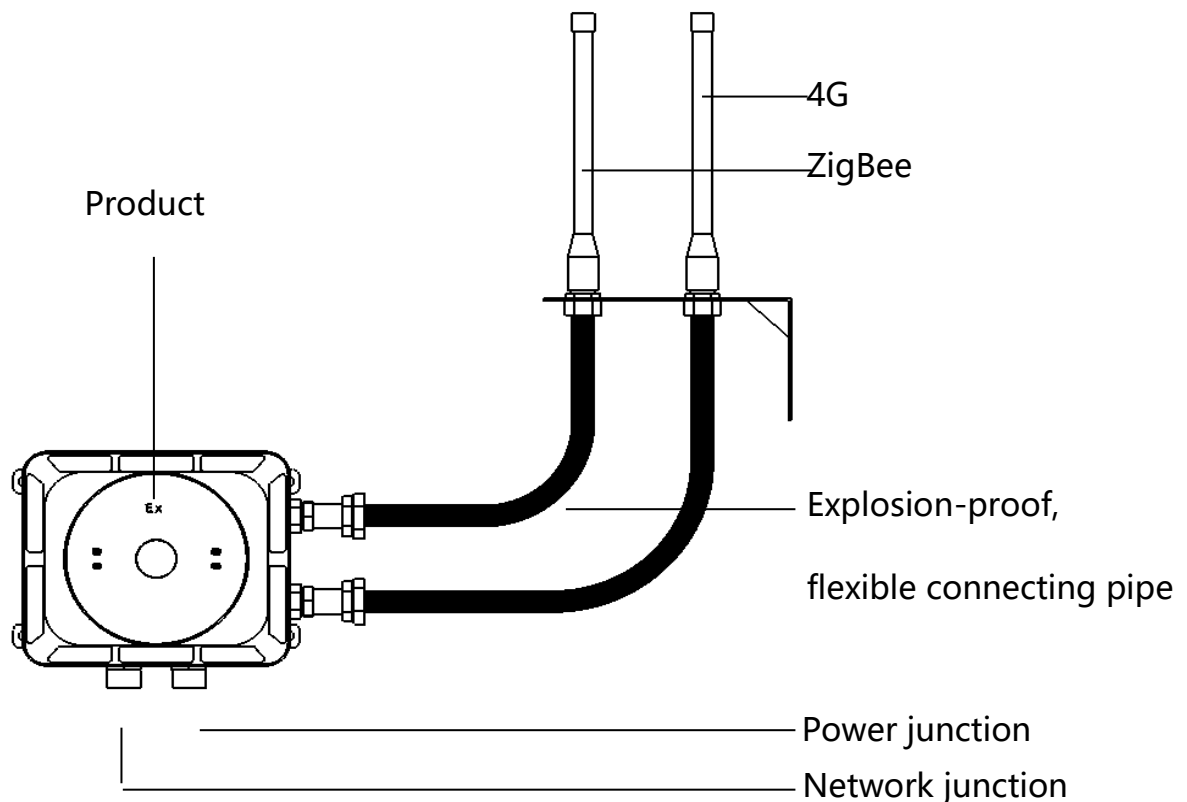
Know your product

SD3400 (General Edition)



SD3400 (General Edition) WB AN

SD3410 (explosion-proof version)



SD3410 (explosion-proof version)

Gateway indicator light instructions

RUN: move

NET: network

STA: state

(1) The gateway is powered on, the running light is shining, the state light is always on, waiting for about 3s,

and the network light is always on, indicating that the system is running normally;

(2) The gateway is powered on. When the system is running normally, wait for about 40s, the running light is always on, the network light is always on, and the state light always on, indicating that the gateway enters the configuration mode;

(3) The gateway is powered on, when the system is running normally, wait for about 40s, the running light flashes, the network light flashes, and the state light is always on, indicating that the gateway connection service is normal;

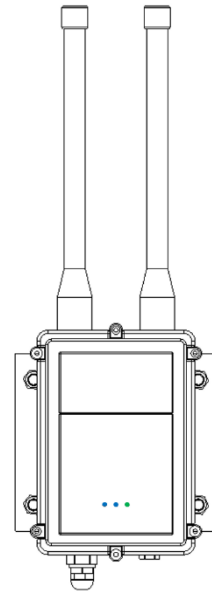
(4) Power on the gateway, when the system is running normally, wait for about 40s, the running light is flashing, the network light is always on, and the state light is always on, indicating that the gateway connection service fails;

Intelligent gateway installation method

SD3400 (General Edition)

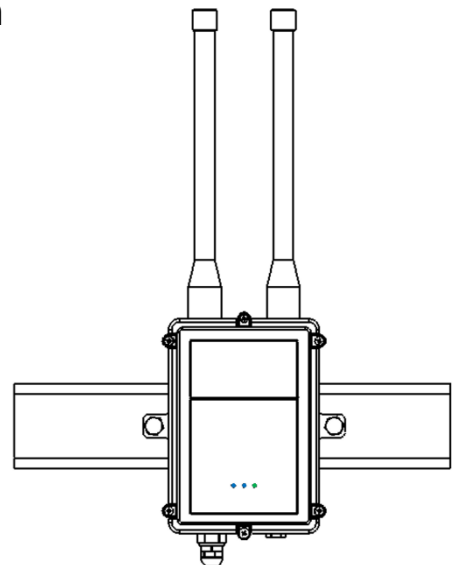
Wall-mounted installation:

1. Use the connections to the smart gateway fixed.
2. Wall drilling (punching diameter to the used Contact hole distance and expansion bolt diameter match) make
Connect the installed smart gateway with an expansion bolt
Fixed with the wall surface.



Trough-type steel-type installation

1. Use the connections to the smart gateway fixed.
2. Site groove steel hole (hole size to be used Connector hole size and hole spacing are the same) use screw
The bolt will install the connection parts of the intelligent gateway with the site
The Trough steel is fixed.



SD3410 (explosion-proof version)

Wall-mounted installation:

1. Wall drilling (punching diameter

and the day used

Holdistance of bracket support and diameter of expansion bolts

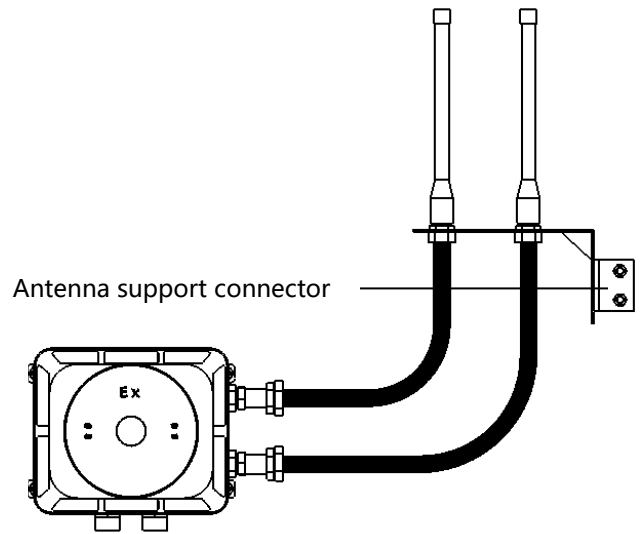
Match) Use expansion bolts to be an intelligent explosion-proof gateway

Fixed with the wall surface.

2. Attach the antenna support attachment with the expansion bolts

Good (the length of the expansion bolt is determined according to the site wall thickness)

Fixed the antenna support and the connections with the bolts



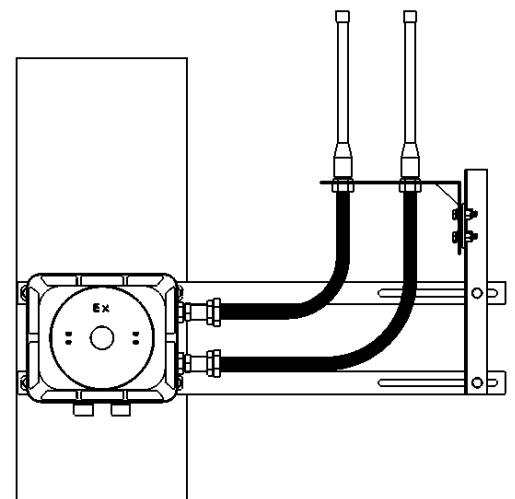
Welding installation of prefabricated supports:

1. Select the position on the bearing pipe

Welded on the load-bearing column;

2. Use bolts to connect the intelligent gateway, prefabricated support A, The prefabricated bracket B can be assembled and fixed.

*** Note: Do not remove the host shell and antenna, Otherwise, it may lead to product failure.**



conformally connected space

The warranty period of the intelligent wireless diagnostic instrument product is 2 years. During the normal use of the product, if the product has a non-human damaged performance failure, provide free adjustment, maintenance and replacement within 2 years from the date of purchase.

After-sales service hotline:

warranty card

userinfo	
surname and personal name	
contact number	
postal address	
date of purchase	
Sales unit information	
name	
address	
contact number	
on-product information	
product model	
Product serial number	

This information is for reference only and does not constitute a commitment of any kind