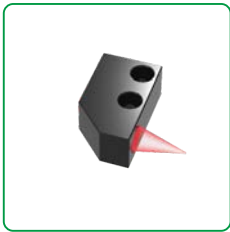


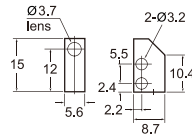
# Fiber Lens

## Diffuse reflection

### PF-5D



Housing:aluminum  
Lens:glass

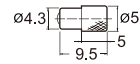


Diameter of beam:  $\phi$  0.5-3  
Suit to M3 diameter fiber optic sensor  
Focal distance: 8-30mm

### PF-3D



Housing:aluminum  
Lens:plastic

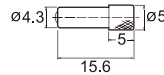


Size of pointed end:  $\phi$  4.3  
Diameter of beam: Approx.  $\phi$  4 (Sensing distance: 0-20mm)  
Suit to M3 diameter fiber optic sensor

### PF-2D



Housing:aluminum  
Lens:plastic

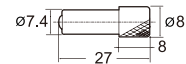


Size of pointed end:  $\phi$  4.3  
Diameter of beam: Approx.  $\phi$  0.4  
Suit to M3 diameter fiber optic sensor  
Focal distance: 7  $\pm$  2mm

### PF-4D



Housing:aluminum  
Lens:glass

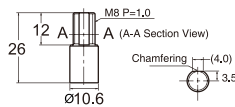


Size of pointed end:  $\phi$  7.4  
Diameter of beam: Approx.  $\phi$  0.5  
Suit to M3 diameter fiber optic sensor  
Focal distance: 15  $\pm$  2mm

### PF-6D



Housing:aluminum  
Lens:glass



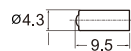
Size of pointed end:  $\phi$  10.6  
Diameter of beam: Approx.  $\phi$  2.0  
Suit to M3 diameter fiber optic sensor  
Focal distance: 35  $\pm$  2mm

## Thru-beam

### PF-4T



Housing:aluminum  
Lens:glass



Size of pointed end:  $\phi$  4.3  
Suit to M2.6 diameter fiber optic sensor  
Max.sensing distance: 3600mm

### PF-2T

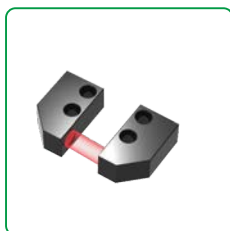


Housing:nickle plated brass  
Lens:glass

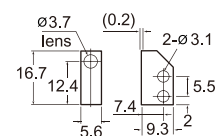


Size of pointed end:  $\phi$  4  
Suit to M2.6 diameter fiber optic sensor  
Max.sensing distance: 3600mm

### PF-5T

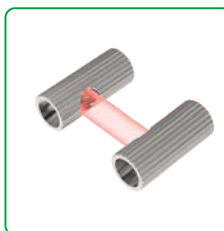


Housing:aluminum  
Lens:glass



Suit to M2.6 diameter fiber optic sensor  
Max.sensing distance: 3600mm

### PF-1T



Housing:nickle plated brass  
Lens:acrylic



Size of pointed end:  $\phi$  4  
Suit to M2.6 diameter fiber optic sensor  
Max.sensing distance: 3600mm

#### Fiber Optic

#### Slot Sensors

#### Photoelectric

#### Laser

#### Proximity

#### Displacement

#### Magnetic

#### Contact

#### Area

#### Ultrasonic

#### Vision

#### Vibration

#### Temperature

#### Annexes

#### Guidance

#### Fiber amplifiers

Standard economical

High stability

High performance type

High speed response

#### Fiber components

Popular type

Array-type

Flat bracket type

Side-view type

High elastic type

High temperature resistant

Small spot type

Combination type

High end type

#### Fiber lens

Fiber lens