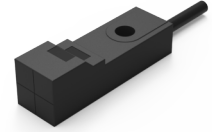
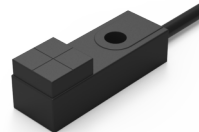


Mini-square

Pre-wired

Proximity

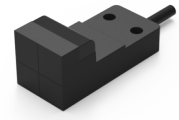
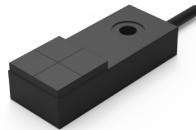
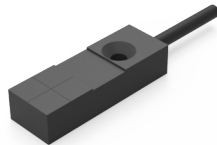


Appearance				
Mounting	Unshielded			
Housing size	E06	E07	E08	E09
Sensing distance	1mm ± 15%	1mm ± 15%	2.5mm ± 10%	2.5mm ± 10%
Housing material	Plastic			
Operating voltage	10~30V DC(Ripple < 10%)			
Voltage drop	< 1.5V			
Load Current , Max	100mA		150mA	
Current consumption	< 10mA			
Leakage current	< 0.01mA			
Switch frequency	500Hz		800Hz	
Repeat accuracy	< 5% (Sr)		< 1% (Sr)	
Hysteresis	< 15% (Sr)			
Sensing surface material	PC			
Operating Temperature	-25°C~+75°C			
Protective circuit	-		Short circuit	
Degree of protection	IP67			
Model No.	NPN Normally open TEN06-01[N _{NO}]	NPN Normally open TEN07-01[N _{NO}]	NPN Normally open TEN08-2.5[N _{NO}] (HOT)	NPN Normally open TEN09-2.5[N _{NO}] (HOT)
Others	[N _{NO}]:NPN Normally open	[N _{NC}]:NPN Normally closed	[P _{NO}]:PNP Normally open	[P _{NC}]:PNP Normally closed

- Fiber Optic
- Slot Sensors
- Photoelectric
- Laser
- Proximity**
- Displacement
- Magnetic
- Contact
- Area
- Ultrasonic
- Vision
- Vibration
- Temperature
- Annexes

Guidance

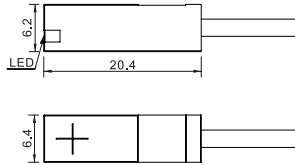
- Inductive sensors**
- Standard distance
- Extended distance
- Long distance
- Square
- Mini square**
- Mini-cylindrical
- Short-body
- Ring-type
- Metal face
- Temperature
- Analog output
- DC 2 wires
- IP69K high protection
- Capacitive sensors**
- Cylindrical
- Correction resistanc type
- Flat type
- Level detection



Appearance				
Mounting	Unshielded			
Housing size	E10	E12	E15	E16
Sensing distance	2.5mm/4mm ± 10%	4mm ± 10%	5mm/8mm ± 10%	5mm/8mm ± 10%
Housing material	Plastic			
Operating voltage	10~30V DC(Ripple < 10%)			
Voltage drop	< 1.5V			
Load Current, Max	150mA			
Current consumption	< 10mA			
Leakage current	< 0.01mA			
Switch frequency	800Hz/200Hz		1KHz/500Hz	
Repeat accuracy	< 5% (Sr)		< 1% (Sr)	
Hysteresis	< 15% (Sr)			
Sensing surface material	PC			
Operating Temperature	-25°C~+75°C			
Protective circuit	Short circuit			
Degree of protection	IP67			
Model No.	NPN Normally open TEN10-2.5[N _{NO}]/TEN10-04[N _{NO}]	NPN Normally open TEN12-04[N _{NO}]	NPN Normally open TEN15-05[N _{NO}]/TEN15-08[N _{NO}]	NPN Normally open TEN16-05[N _{NO}]/TEN16-08[N _{NO}]
Others	[N _{NO}]:NPN Normally open	[N _{NC}]:NPN Normally closed	[P _{NO}]:PNP Normally open	[P _{NC}]:PNP Normally closed

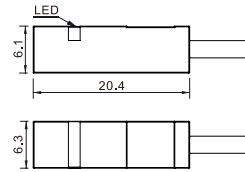
E06

TEN06-01□□



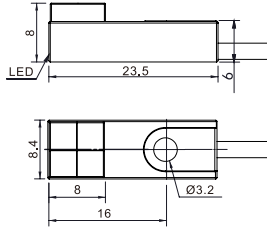
E07

TEN07-01□□



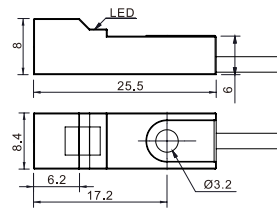
E08

TEN08-2.5/03□□



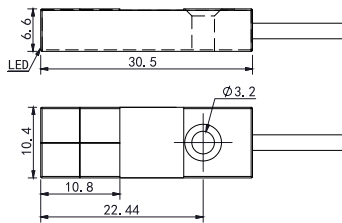
E09

TEN09-2.5/03□□



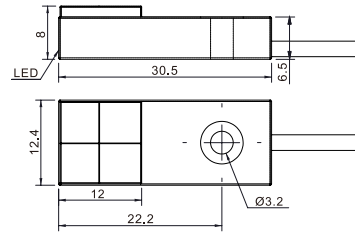
E10

TEN10-2.5/04□□



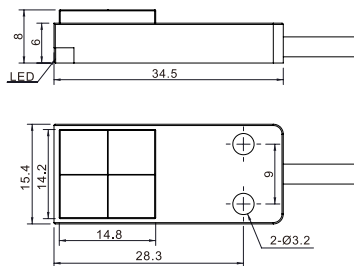
E12

TEN12-04□□



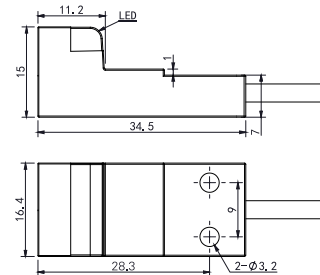
E15

TEN15-05/08□□



E16

TEN16-05/08□□



Fiber Optic

Slot Sensors

Photoelectric

Laser

Proximity

Displacement

Magnetic

Contact

Area

Ultrasonic

Vision

Vibration

Temperature

Annexes

Guidance

Inductive sensors

Standard distance

Extended distance

Long distance

Square

Mini square

Mini-cylindrical

Short-body

Ring-type

Metal face

Temperature

Analog output

DC 2 wires

IP69K high protection

Capacitive sensors

Cylindrical

Correction

resistanc type

Flat type

Level detection